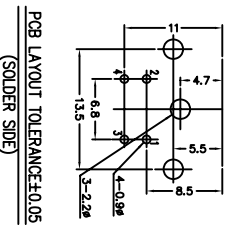
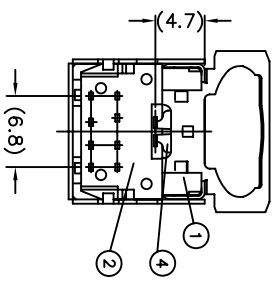
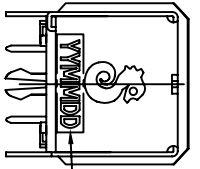
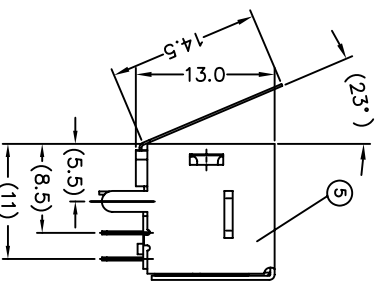
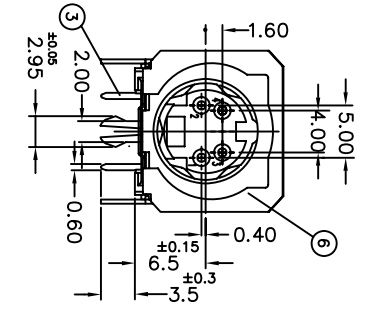
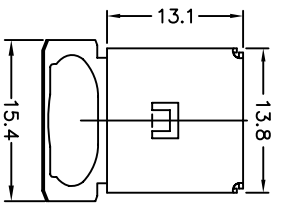


REV/ECN NO OR DESCRIPTION	REVISED DATE
A PRODUCT REASED	CHARLIE 2009.02.20



- SPECIFICATIONS:**
- CURRENT CARRYING CAPACITY:
 - 1) AC: 100V 1A MAX.
 - 2) DC: 12V 3A MAX.
 - CONTACT RESISTANCE:
 - 1) INITIAL, BEFORE LIFE CYCLE TEST. PIN TO CONTACT: 30mΩ MAX. PLUG SHIELD TO CONNECTOR: 50mΩ MAX.
 - 2) AFTER LIFE CYCLE TEST. PIN TO CONTACT: 200mΩ MAX. PLUG SHIELD TO CONNECTOR: 500mΩ MAX.
 - INSULATION RESISTANCE: BETWEEN ANY ADJACENT OPEN CONTACTS SHALL NOT BE LESS THAN 50MΩ AT 250V DC INSULATION RESISTANCE TEST.
 - DIELECTRIC STRENGTH: A POTENTIAL OF 250V AC R.M.S. 50/60HZ SHALL BE APPLIED BETWEEN ANY OPEN CONTACTS FOR ONE MINUTE WITHOUT BREAKDOWN.
 - INSERTION FORCE: 5.0Kg MAX.
 - WITHDRAWAL FORCE: 0.8Kg - 4.0Kg.
 - SINGLE CONTACT MAINTENANCE FORCE: 30g MIN. BETWEEN EACH CONTACT AND MATCHING PIN (0.6±0.03 DIA).
 - LIFE CYCLE TEST: CONNECTOR SHALL BE SUBJECT TO 5,000 CYCLES AT 10 TO 20 CYCLES PER MINUTE WITH NO ELECTRICAL LOAD.
 - MARKING: MARK ON REAR OF CONNECTOR.
 - SOLDER HEAT RESISTANCE: 260°C 10 SECS.
 - TO CONFORM TO THE SINGATRON HAZARDOUS SUBSTANCE FREE SPEC.
 - HALOGEN FREE PRODUCT IDENTIFICATION MARK ON JACK:
 - HALOGEN FREE PRODUCT IDENTIFICATION LABEL ON PACKAGING:
 - FOR LEAD-FREE PROCESS.

6	GROUNDING SPRING	1	STAINLESS STEEL 0.2t	TIN(LEAD-FREE) PLATING
5	SHIELDING B	1	SPCC 0.4t	TIN(LEAD-FREE) PLATING
4	SHIELDING A	1	COPPER ALLOY 0.3t	GOLD FLASH ON MATING AREA TIN(LEAD-FREE) PLATING ON SOLDER MASK, ALL OVER NICKEL PLATING.
3	CONTACT	4	COPPER ALLOY 0.3t	
2	COVER	1	HIGH TEMP. THERMOPLASTIC UL 94V-0	GRAY COLOR(425C)
1	BODY	1	HIGH TEMP. THERMOPLASTIC UL 94V-0	GRAY COLOR(425C)

UNLESS OTHERWISE SPECIFIED TOLERANCES		Singatron Enterprise Co., Ltd. 信音企業股份有限公司	
DECIMALS:	ANGLES:	MINIATURE DIN CONNECTOR	
X : ±0.5	X : ±2°	DWN	CHARLIE
X.X : ±0.3	X.X : ±1'	CHKD	RYAN
X.XX : ±0.2		APVD	ROBIN
		PART NO. 2MJ-1512-037	
		SCALE	2:1
		UNIT:	mm
		SIZE:	A3
		SHEET:	10F1
		REV:	A
CUSTOMER COPY			

1 2 3 4 5 6 7 8

A B C D E F