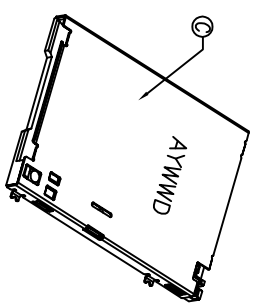
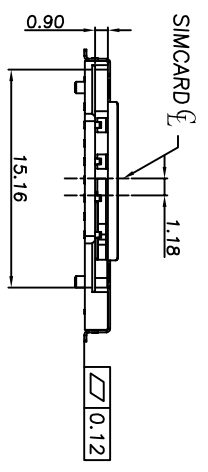
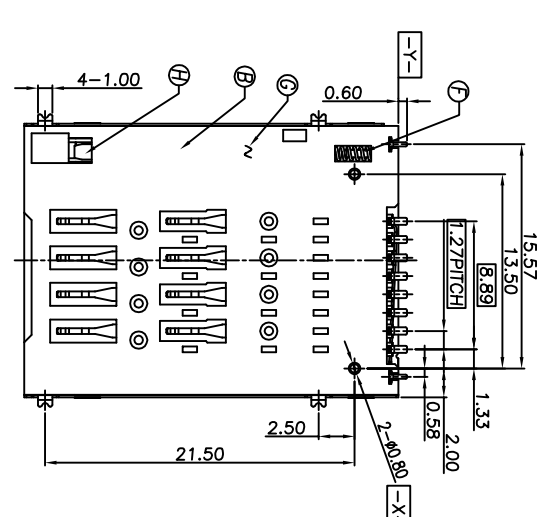
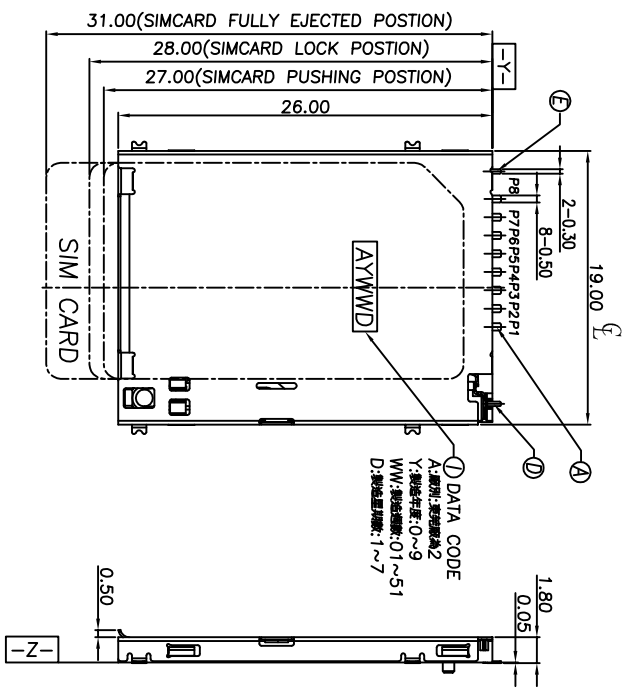


REV.	ECN NO. OR DESCRIPTION	REVISED	DATE
A	PDR RELEASE	AMVC	2009.07.07

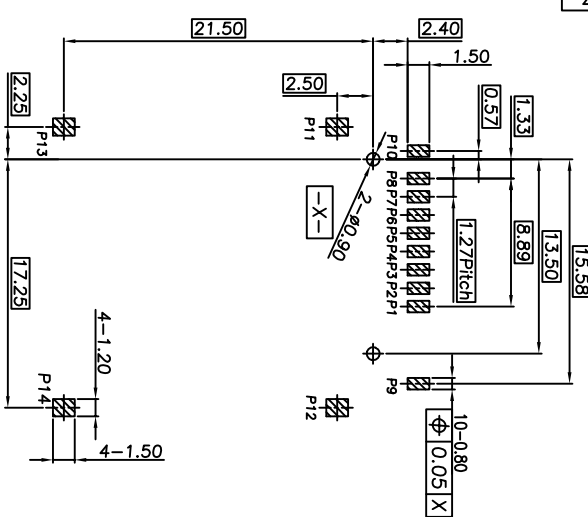


- SPECIFICATIONS:
1. OTHER GENERAL SPEC. TO REFER "2SM1511 SERIES SPEC."
 2. TO CONFORM TO SINGATRON HAZARDOUS SUBSTANCE FREE SPEC.
 3. HALOGEN FREE PRODUCT IDENTIFICATION LABEL ON PACKAGING.
 4. PACKAGE: SEE "2SM1511 SERIES" PACKAGE.
 5. FOR REFLOW SOLDERING LEAD-FREE PROCESS.

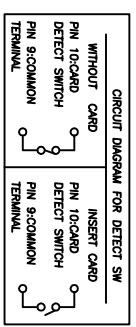


PIN ASSIGNMENTS

CONNECTOR TERMINAL NO.	SIM CARD	PIN NO.
PIN 1	C5	GND: PWR SIGNAL AND GND
PIN 2	C1	VCC: PWR SIGNAL AND GND
PIN 3	C6	VPP: PROGRAMMING VOLTAGE
PIN 4	C2	RST: RESET SIGNAL
PIN 5	C7	I/O: SERIAL DATA INPUT/OUTPUT
PIN 6	C3	CLK: CLOCKING SIGNAL
PIN 7	C8	N/A
PIN 8	C4	COMMON TERMINAL
PIN 9		CARD DETECT SWITCH
PIN 10		GND
PIN 11~14		



Recommend PCB Layout
Tolerance: ±0.05mm (Top view)
Recommend PCB THICKNESS: 1.6mm



PART NO. 2SM1511-000111
PACKAGE
I: TAP & REEL
II: HOUSING COLOR
I: BLACK
CONTACT PLATING
I: Matt Tin

ITEM	DESCRIPTION	QTY	MATERIAL	PLATING & COLOR
I	INK	1		BLACK COLOR
H	Push Bar	1	LCP	BLACK COLOR
G	HOOK	1	WIRE-SUS304	
F	SPRING	1	WIRE-NAS301	
E	SWITCH B	1	C5210	NI-PLATING
D	SWITCH A	1	C5210	GOLD PLATING
C	SHELL	1	SUS304	NI-PLATING/GOLD SOLDER-TAIL
B	HOUSING	1	LCP	BLACK COLOR
A	TERMINALS	8	C5210	MATT TIN PLATING

UNLESS OTHERWISE SPECIFIED TOLERANCES

DECIMALS: ANGLES:

X :±0.5 X :±2
X.X :±0.3 X.X :±1'
X.XX :±0.2

Singatron Enterprise Co., Ltd.
信音企業股份有限公司

TITLE: SIM CARD PUSH-PUSH CONNECTOR

DRAWN: AMVC 2009/07/07 PART NO. 2SM1511-000111
CHKD: JAMVON 2009/07/07 SCALE: N/A UNIT: mm
APVD: JAMVON 2009/07/07 SIZE: A3 SHEET: 1 OF 1 REV: A

CUSTOMER COPY