



DC Power Jack



2DC1015-000111 (1.65 DC Power Jack)



M/P Location : TW

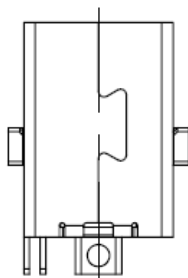
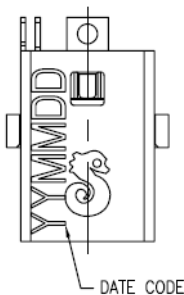
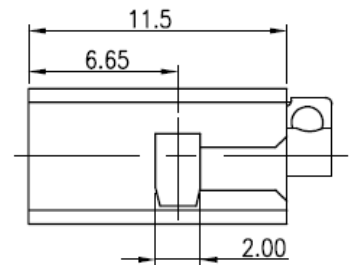
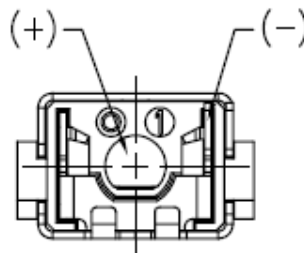
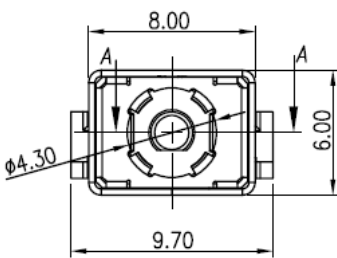
Applications : Notebook

- Features :
- 1) 負極2接點
 - 2) GROUND,SHELL,負極端子相互導通接地.
 - 3) 焊線式
 - 4) SHELL 四面包覆

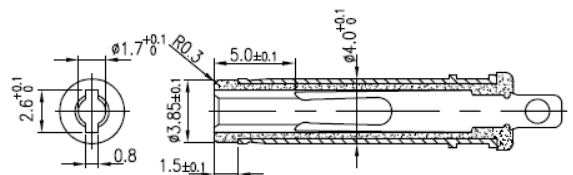
Specifications

Items		Specifications
Structure	Outline Dimension (L x W x H)	11.5 x 8 x 6 mm
	Mounting Method	Wire
Electrical	Rating	20V 2A
	Contact Resistance (Initial)	30m Max.
	Insulation Resistance (Initial)	100M Min. MEASURED BY 500 VDC
	Voltage Withstand	500V AC 1 Minute
Mechanical	Insertion Force	0.5~2.0 kg
	Withdrawal Force	0.4~1.5 kg
	Life Cycle	5,000 Cycles

Dimension



Mating Plug



If you have any question, please contact with marketing