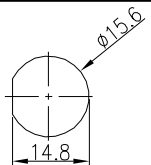
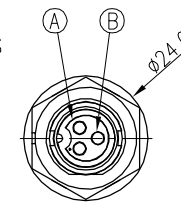
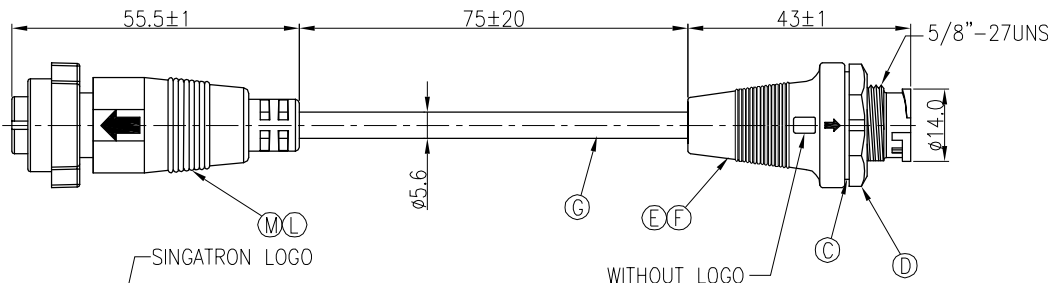
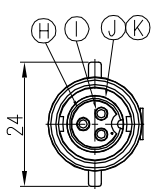


| REV. | ECN NO OR DESCRIPTION | REVISED | DATE       |
|------|-----------------------|---------|------------|
| A    | PDR NO.:T160115-3A    | JF      | 2017.03.01 |



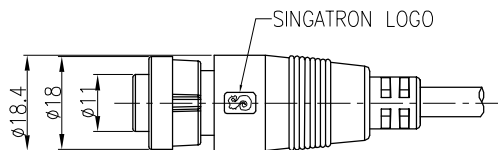
RECOMMENDED  
PANEL CUT-OUT

A VIEW



A VIEW

CONN1.  
WATERPROOF RATE: IP67



Conn 2.  
WATERPROOF RATE: IP55

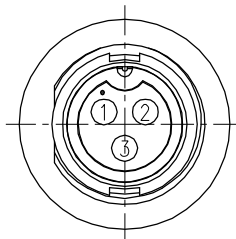
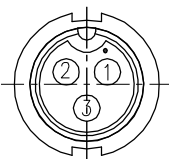
|    |              |     |  |   |
|----|--------------|-----|--|---|
| M  | INNER MOLD 2 | 1   | PVC                                      | BLACK                                     |
| L  | OVER MOLD 2  | 1   | PVC                                      | BLACK                                     |
| K  | O-RING       | 1   | EPDM                                     | BLACK                                     |
| J  | LOCK NUT     |     | PA66+GF                                  | BLACK                                     |
| I  | MALE PIN     | 3   | BRASS                                    | 1~3u" GOLD PLATING<br>OVER NICKEL PLATING |
| H  | FEMALE BODY  | 1   | PA66+GF                                  | BLACK                                     |
| G  | CABLE        | 1   | UL2464 18AWG*3C+AL<br>UV RESISTANT OD5.6 | BLACK(PVC JACKET)                         |
| F  | OVER MOLD    | 1   | TPU                                      | BLACK                                     |
| E  | INNER MOLD   | 1   | PVC                                      | BLACK                                     |
| D  | PANEL NUT    | 1   | PA66+GF                                  | BLACK                                     |
| C  | GASKET       | 1   | EPDM                                     | BLACK                                     |
| B  | FEMALE PIN   | 3   | Phosphor Bronze                          | 1~3u" GOLD PLATING<br>OVER NICKEL PLATING |
| A  | MALE BODY    | 1   | PA66+GF                                  | BLACK                                     |
| NO | DESCRIPTION  | QTY | MATERIAL                                 | PLATING & COLOR                           |

|        |            |        |
|--------|------------|--------|
| 3      | YELLOW     | 3      |
| 2      | BLACK      | 2      |
| 1      | WHITE      | 1      |
| CONN2. | WIRE COLOR | CONN1. |

PIN OUT

CONN2.

CONN1.



Pin Assignments  
Front View

NOTES:

1. WATERPROOF RATE: IP67  
IP67: IMMERSED IN 1M WATER FOR 30 MINUTES
2. CURRENT RATING: 10A
3. SPECIFICATIONS:SEE "CIRCULAR SERIES SPECIFICATIONS".
4. TO CONFORM TO SINGATRON HAZARDOUS SUBSTANCE FREE SPEC.
5. GREEN PRODUCT IDENTIFICATION LABEL ON PACKAGING: **CLP PASS**
6. FOR PANEL THICKNESS Max. 2.0mm

|            |          |
|------------|----------|
| DECIMALS:  | ANGLES:  |
| X :±0.5    | X :±2°   |
| X.X :±0.3  | X.X :±1° |
| X.XX :±0.2 |          |

Singatron Enterprise Co., Ltd.  
信音企業股份有限公司

|       |  |                         |                     |
|-------|--|-------------------------|---------------------|
| TITLE | CIRCULAR STANDARD SIZE (IP67)<br>MALE CONN. FEMALE PIN 3PIN(10A) LOCK TYPE |                         |                     |
| DWN   | JF   | PART NO.2CT3040-W03401H |                     |
| CHKD  | Yang   | SCALE 1:1               | UNIT: mm            |
| APVD  | Harlen   | SIZE: A2                | SHEET:1 OF 1 REV: A |

CUSTOMER COPY