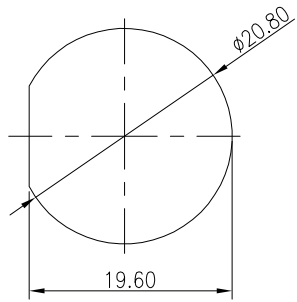
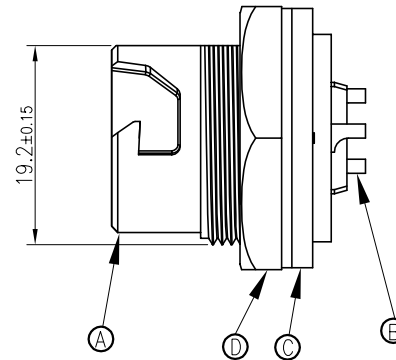
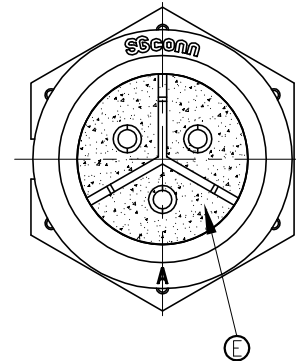
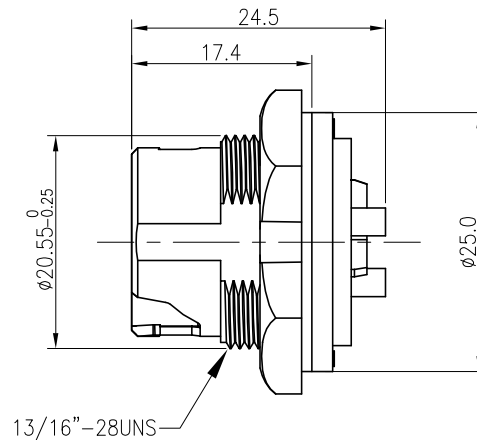
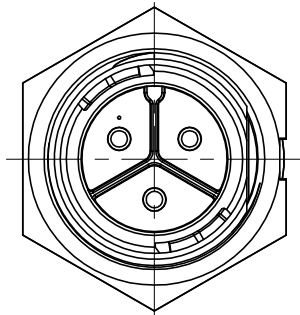


| REV. | ECN NO OR DESCRIPTION | REVISED | DATE |
|------|-----------------------|---------|------------|
| 1 | PDR NO.:S131104-4B | Lx-Wu | 2013.02.08 |

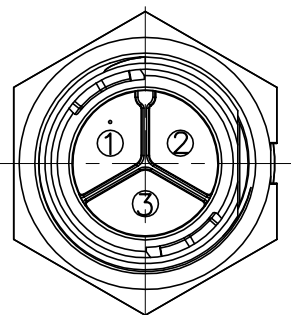


RECOMMENDED PANEL CUT-OUT



NOTES:

- ELECTRICAL CHARACTERISTICS:
 - 1-1 CURRENT RATING: 10 AMPS.
 - 1-2 CONTACT RESISTANCE: 30 mOhm Max.
 - 1-3 INSULATION RESISTANCE: 100 MOhm Min. at 500VDC.
 - 1-4 BREAKDOWN VOLTAGE: 500 VAC PER MINUTE.
- MECHANICAL CHARACTERISTICS:
 - TIGHTENING TORQUES: 0.8~1.0Nm(7.08~8.85lbf.in.)
- ENVIRONMENTAL:
 - 3-1 OPERATING TEMPERATURE: -40°C TO +105°C.
 - 3-2 SEALING REQUIREMENTS: IP67.
- LIFE TEST: 1,000 CYCLES MIN.
- FOR PANEL THICKNESS MAX OF 3.5mm
- OTHER GENERAL SPEC. TO REFER "CIRCULAR SERIES GENERAL SPEC".
- FOR TECHNICAL DATA REFER TO YOUR LOCAL SINGATRON ELECTRONICS SALES OFFICE.
- ALL DIMENSIONS ARE NOMINAL FOR REFERENCE ONLY UNLESS OTHERWISE STATED.
- TO CONFORM TO SINGATRON HAZARDOUS SUBSTANCE FREE SPEC.
- GREEN PRODUCT IDENTIFICATION LABEL ON PACKAGING **G.P. PASS**



PIN ASSIGNMENTS
FRONT VIEW

| E | LIQUID GLUE | 1 | N/A | BLACK |
|----|-------------|-----|------------|--|
| D | NUT | 1 | PA66+25%GF | BLACK |
| C | GASKET | 1 | EPDM | BLACK |
| B | MALE PIN | 3 | BRASS | 1~3u" GOLD PLATING OVER NICKEL PLATING |
| A | BODY | 1 | PA66+25%GF | BLACK |
| NO | DESCRIPTION | QTY | MATERIAL | PLATING & COLOR |

UNLESS OTHERWISE SPECIFIED TOLERANCES

| | |
|------------|----------|
| DECIMALS: | ANGLES: |
| X :±0.5 | X :±2° |
| X.X :±0.3 | X.X :±1° |
| X.XX :±0.2 | |

sbcconn Singatron Electronic(China) Co., Ltd.
Waterproof Connectors 信音電子(中國)股份有限公司

| | | | |
|-------|---|--------------------------------|------|
| TITLE | QUICK SERIES MIDDLE SIZE (SOLDER TYPE) MALE CONN. MALE 3PIN(10A) | | |
| DWN | Lx-Wu | PART NO.2QM3002-X03400H | |
| CHKD | SCALE 2:1 | UNIT: mm | ⊕ ⊖ |
| APVD | SIZE: A3 | SHEET: 1 OF 1 | REV: |

CUSTOMER COPY