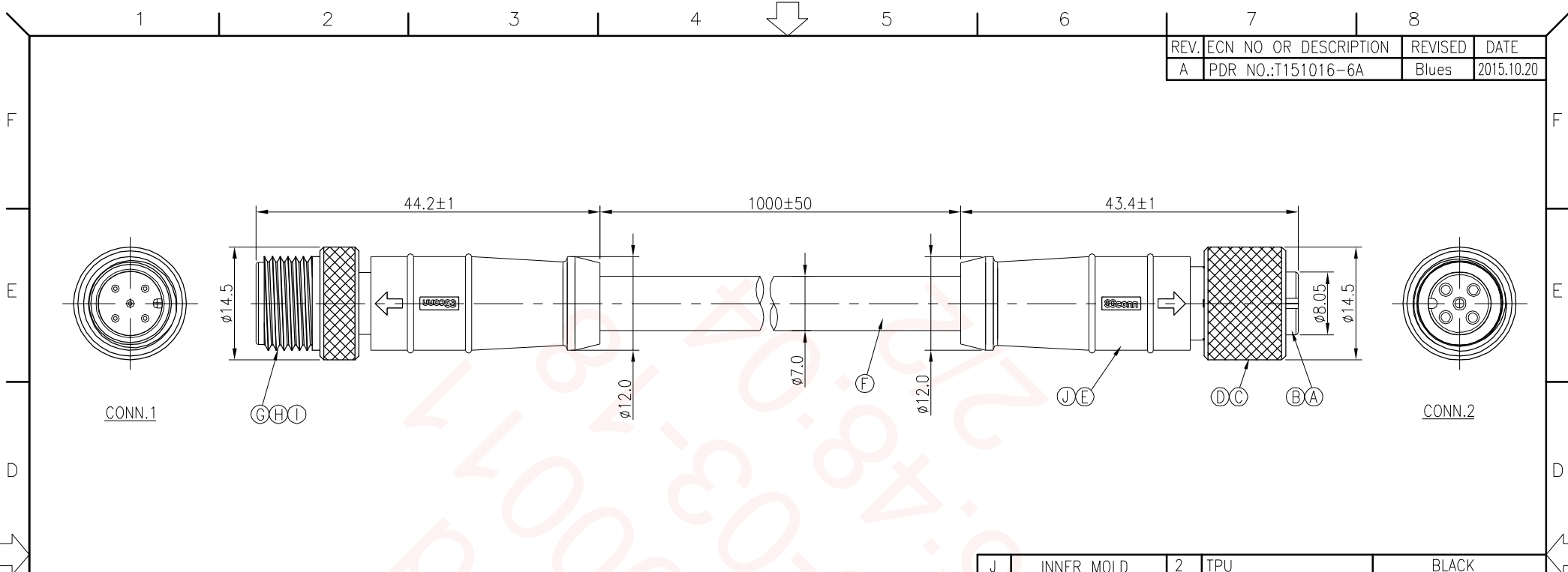


REV.	ECN NO OR DESCRIPTION	REVISED	DATE
A	PDR NO.:T151016-6A	Blues	2015.10.20



5	BLUE	5	TWIST
4	WHITE	4	
3	BLACK	3	TWIST
2	RED	2	
1	DRAIN	1	
CONN.1	WIRE COLOR	CONN.2	
PIN OUT			
CONN.1		CONN.2	
Pin Assignments Front View			

- NOTES:
- ELECTRICAL CHARACTERISTICS:
 - 1-1 CURRENT RATING: 5 AMPS.
 - 1-2 CONTACT RESISTANCE: 3 Ohm Max.
 - 1-3 INSULATION RESISTANCE: 100 MOhm Min. at 500VDC.
 - 1-4 BREAKDOWN VOLTAGE: 500 VAC PER MINUTE.
 - MECHANICAL CHARACTERISTICS:
 - TIGHTENING TORQUES: 1.0~1.2Nm(8.85~10.62lbf.in.).
 - ENVIRONMENTAL:
 - 3-1 OPERATING TEMPERATURE: -40°C TO +80°C.
 - 3-2 SEALING REQUIREMENTS: IP67.
 - LIFE TEST: 1,000 CYCLES MIN.
 - OTHER GENERAL SPEC. TO REFER "M12 SERIES SPEC."
 - FOR TECHNICAL DATA REFER TO YOUR LOCAL SINGATRON ELECTRONICS SALES OFFICE.
 - ALL DIMENSIONS ARE NOMINAL FOR REFERENCE ONLY UNLESS OTHERWISE STATED.
 - TO CONFORM TO SINGATRON HAZARDOUS SUBSTANCE FREE SPEC.
 - GREEN PRODUCT IDENTIFICATION LABEL ON PACKAGING: **G.P. PASS**.

J	INNER MOLD	2	TPU	BLACK
I	MALE SCREW NUT	1	BRASS	NICKEL PLATING 60u"
H	MALE PIN	5	BRASS	5u" GOLD PLATING 20u" PD/NI PLATING OVER NICKEL 50u"
G	BODY	1	TPU	BLACK
F	CABLE	1	(24#*1P+AL)+(22#*1P+AL)+D+B OD7.0 (UV)	BLACK(PVC JACKET)
E	OVER MOLD	2	TPU	BLACK
D	O-RING	1	VITON	RED
C	FEMALE SCREW NUT	1	BRASS	NICKEL PLATING 60u"
B	FEMALE PIN	5	COPPER ALLOY	5u" GOLD PLATING 20u" PD/NI PLATING OVER NICKEL 50u"
A	BODY	1	TPU	BLACK
NO	DESCRIPTION	QTY	MATERIAL	PLATING & COLOR
UNLESS OTHERWISE SPECIFIED TOLERANCES			Singatron Enterprise Co., Ltd. 信音企業股份有限公司	
DECIMALS:		ANGLES:	TITLE	
X	:±0.5	X	:±2'	M12 SERIES 180° 5PIN FEMALE CONN. TO MALE CONN.
X.X	:±0.3	X.X	:±1"	DWN Blues PART NO.2MT3012-W05357H
X.XX	:±0.2			CHKD Harlen SCALE 1:1 UNIT: mm
				APVD Steve SIZE: A3 SHEET:1 OF 1 REV: A
CUSTOMER COPY				