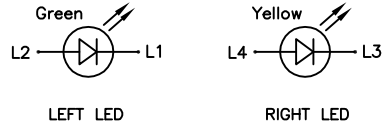
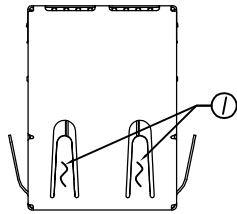


REV.	ECN NO OR DESCRIPTION	REVISED	DATE
A	PDR RELEASE	IVY-C	2014.08.20



Emitting Color	λ_p (nm)	V_f @ $I_f=20mA$	I_r @ $V_r=5V$
Green	565	1.7V~2.6V	10 μ A max.
Yellow	585	1.7V~2.6V	10 μ A max.

LED OPTIONAL
0: L: GREEN / R: YELLOW

SHELL OPTIONAL
2: SHELL WITH SPRING

PART NO.
2TJ1582-020111F

SUFFIX: HALOGEN FREE

PACKAGE
1: TRAY

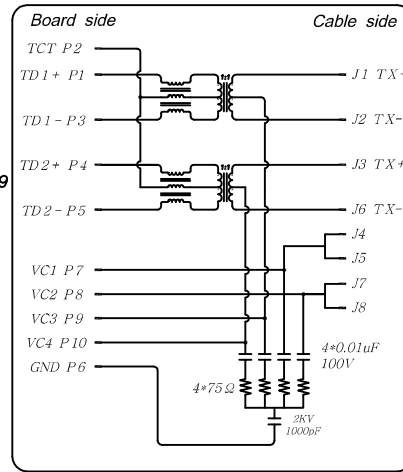
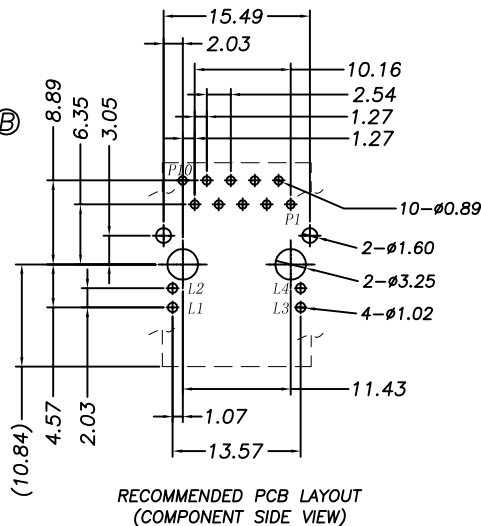
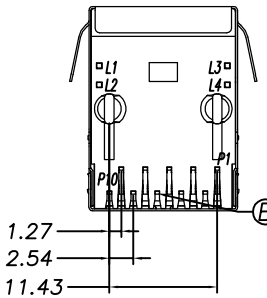
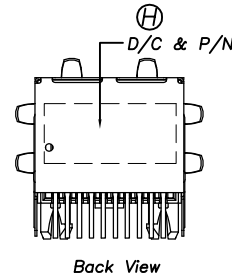
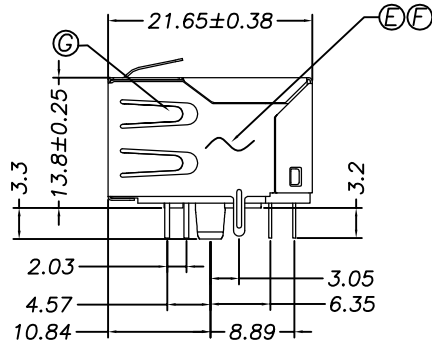
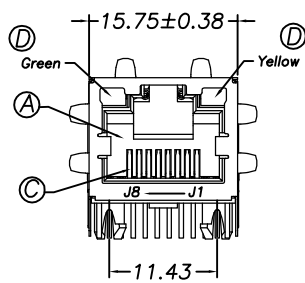
HOUSING COLOR
1: BLACK

CONTACT PLATING
1: 15 μ " Au PLATED ON CONTACT AREA
100 μ " TIN PLATED ON SOLDER AREA
30~50 μ " NICKEL UNDERPLATED OVERALL

- SPECIFICATION:
- TO CONFORM TO SINGATRON HAZARDOUS SUBSTANCE FREE SPEC.
 - GREEN PRODUCT IDENTIFICATION LABEL ON PACKAGING:
 - PACKAGE: SEE "2TJ1582-020111F" PACKAGE.
 - FOR REFLOW SOLDERING LEAD-FREE PROCESS.
 - MATES WITH MODULAR PLUG CONFORMING TO FCC PART 68, SUBPART F.
 - ELECTRICAL
 - INSULATION RESISTANCE : 500 MOHMS MIN
 - DIELECTRIC WITHSTANDING VOLTAGE : 1500 VAC FOR 1 MINUTE
 - DURABILITY TEST RATING
 - INSERTION FORCE WITH THE LATCH DEPRESSED :22N MAX
 - REMOVAL FORCE WITH THE LATCH DEPRESSED :44N MAX
 - DURABILITY :750 CYCLES
 - OPERATING AND STORAGE TEMPERATURE
 - OPERATING TEMPERATURE : -40°C TO +85°C
 - STORAGE TEMPERATURE : -40°C TO +85°C

ELECTRICAL CHARACTERISTICS :

- INSERTION LOSS :
 - 1~100 MHZ -1.0dB MAX.
- RETURN LOSS(LOAD 100 Ω) :
 - 1~30 MHZ -18dB MIN
 - 30~60 MHZ -16dB MIN
 - 60~80 MHZ -12dB MIN
- COMMON MODE REJECTION
 - 1~100 MHZ -30dB MIN
- CROSS TALK
 - 1~100 MHZ -30dB MIN
- INDUCTANCE @ 100KHZ, 0.1V, 8MA DC BIAS
 - (P1-P3),(P4-P5): 350 uH MIN
- HI-POT TEST
 - PCB SIDE TO CABLE SIDE : 1500VAC 60S OR 2250VDC 60S
- URNS RATION 100KHZ
 - (P1-P3) : (J1-J2) = 1:1 \pm 5%
 - (P4-P5) : (J3-J6) = 1:1 \pm 5%
- OTHER GENERAL SPEC. TO REFER "2TJ1582 SERIES SPEC".



I	BASE	2	HIGH TEMP THERMOPLASTIC UL 94V-0	BLACK
H	INK	-	INK	BLACK
G	OUTER SHELL	1	STAINLESS STEEL	TIN PLATED ON SOLDER AREA
F	INSERT MOLD	1	HIGH TEMP THERMOPLASTIC UL 94V-0	BLACK
E	PCB	1		
D	LED	2	LED	GREEN/ YELLOW
C	OUTPUT CONTACT	8	COPPER ALLOY	SEE PART NO.
B	INTPUT CONTACT	10	COPPER ALLOY	TIN PLATED
A	HOUSING	1	HIGH TEMP THERMOPLASTIC UL 94V-0	BLACK
NO	DESCRIPTION	QTY	MATERIAL	PLATING & COLOR

UNLESS OTHERWISE SPECIFIED TOLERANCES		Singatron Enterprise Co., Ltd. 信音企業股份有限公司	
DECIMALS:	ANGLES:	TITLE	RJ45, W/LED, W/MAGNETIC, R/A, W/SHIELD, DIP TYPE
X : ±0.5	X : ±2°	DWN	NY-C 2014.08.20 PART NO. 2TJ1582-020111F
XX : ±0.3	XX : ±1°	CHKD	SCALE 2.5:1 UNIT: mm
XXX : ±0.2		APVD	ANGEL 2014.08.20 SIZE: A3 SHEET: 1 OF 1 REV: A
CUSTOMER COPY			