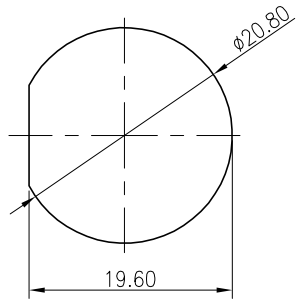
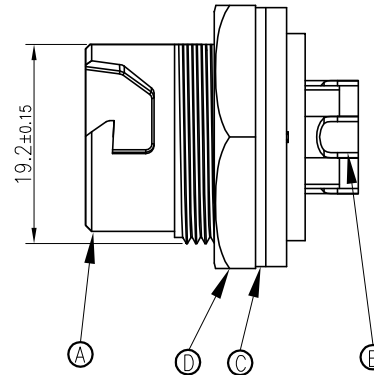
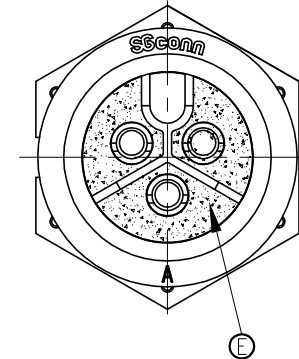
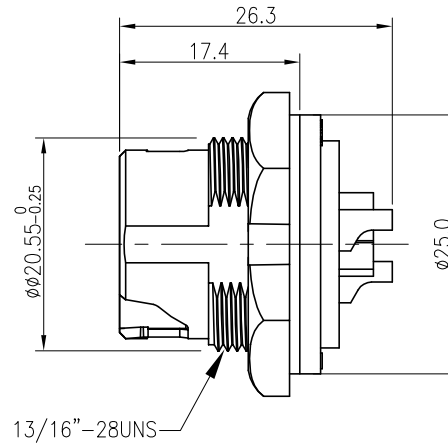
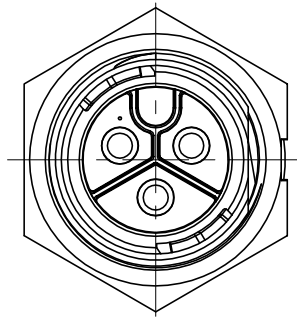


REV.	ECN NO OR DESCRIPTION	REVISED	DATE
1	PDR NO.:S131104-4A	Lx-Wu	2014.02.08



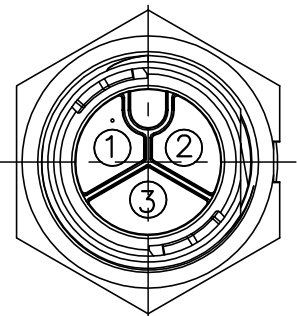
RECOMMENDED PANEL CUT-OUT



NOTES:

- ELECTRICAL CHARACTERISTICS:
  - CURRENT RATING: 20 AMPS.
  - CONTACT RESISTANCE: 30 mOhm Max.
  - INSULATION RESISTANCE: 100 MOhm Min. at 500VDC.
  - BREAKDOWN VOLTAGE: 500 VAC PER MINUTE.
- MECHANICAL CHARACTERISTICS:
 

TIGHTENING TORQUES: 0.8~1.0Nm(7.08~8.85lbf.in.)
- ENVIRONMENTAL:
  - OPERATING TEMPERATURE: -40°C TO +105°C.
  - SEALING REQUIREMENTS: IP67.
- LIFE TEST: 1,000 CYCLES MIN.
- FOR PANEL THICKNESS MAX OF 3.5mm
- OTHER GENERAL SPEC. TO REFER "CIRCULAR SERIES GENERAL SPEC".
- FOR TECHNICAL DATA REFER TO YOUR LOCAL SINGATRON ELECTRONICS SALES OFFICE.
- ALL DIMENSIONS ARE NOMINAL FOR REFERENCE ONLY UNLESS OTHERWISE STATED.
- TO CONFORM TO SINGATRON HAZARDOUS SUBSTANCE FREE SPEC.
- GREEN PRODUCT IDENTIFICATION LABEL ON PACKAGING **G.P. PASS**



PIN ASSIGNMENTS  
FRONT VIEW

E	LIQUID GLUE	1	N/A	BLACK
D	NUT	1	PA66	BLACK
C	GASKET	1	EPDM	BLACK
B	MALE PIN	3	COPPER ALLOY	1~3u" GOLD PLATING OVER NICKEL PLATING
A	BODY	1	PA66	BLACK
NO	DESCRIPTION	QTY	MATERIAL	PLATING & COLOR
UNLESS OTHERWISE SPECIFIED TOLERANCES		Singatron Electronic(China) Co., Ltd. 信音電子(中國)股份有限公司		
DECIMALS:		TITLE		
X	:±0.5	QUICK SERIES MIDDLE SIZE (SOLDER TYPE)		
X.X	:±0.3	MALE CONN. MALE 3 PIN(20A)		
X.XX	:±0.2	DWN	Lx-Wu	<b>PART NO.2QM3002-X03600H</b>
		CHKD	SCALE 2:1	UNIT: mm
		APVD	SIZE: A3	SHEET: 1 OF 1
		REV:1		
<b>CUSTOMER COPY</b>				