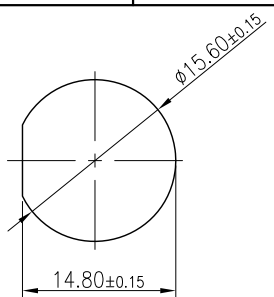
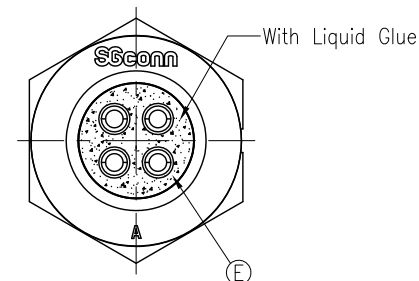
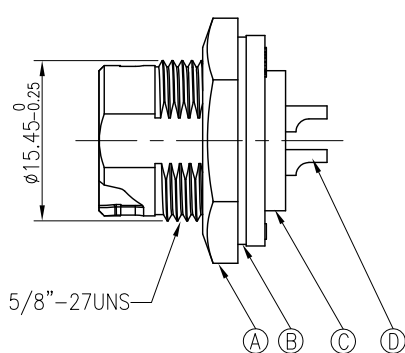
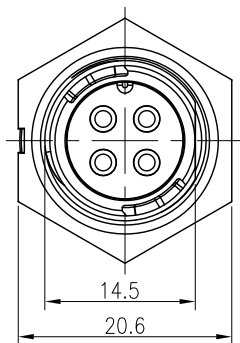
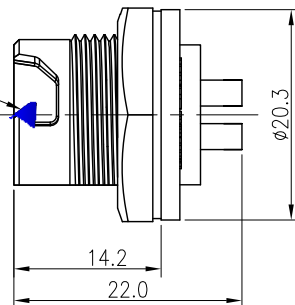


REV.	ECN NO OR DESCRIPTION	REVISED	DATE
A	PDR NO.:S131028-6C	Harlen	2014.04.07
B	ECN NO.:S150367-R	Blues	2015.03.31



RECOMMENDED PANEL CUT-OUT

△ 移印三角標誌
顏色: WHITE



NOTES:

- ELECTRICAL CHARACTERISTICS:
 - CURRENT RATING: 10A.
 - CONTACT RESISTANCE: 30 mOhm Max.
 - INSULATION RESISTANCE: 100 MOhm Min at 500VDC.
 - BREAKDOWN VOLTAGE: 1000 VAC PER MINUTE
- MECHANICAL CHARACTERISTICS:
 - TIGHTENING TORQUES: 0.8~1.0Nm(7.08~8.85lbf.in.).
- ENVIRONMENTAL:
 - OPERATING TEMPERATURE: -40°C TO +105°C.
 - SEALING REQUIREMENTS: IP67.
- LIFE TEST: 1,000 CYCLES MIN.
- FOR PANEL THICKNESS MAX OF 4.0mm
- OTHER GENERAL SPEC TO REFER "QUICK SERIES GENERAL SPEC".
- FOR TECHNICAL DATA REFER TO YOUR LOCAL SINGATRON ELECTRONICS SALES OFFICE.
- ALL DIMENSIONS ARE NOMINAL FOR REFERENCE ONLY UNLESS OTHERWISE STATED.
- TO CONFORM TO SINGATRON HAZARDOUS SUBSTANCE FREE SPEC.
- GREEN PRODUCT IDENTIFICATION LABEL ON PACKAGING **G.P. PASS**

E	LIQUID GLUE	1	N/A	BLACK
D	MALE PIN	*	BRASS	1~3u" GOLD PLATING OVER NICKEL PLATING
C	BODY	1	PA66	BLACK
B	GASKET	1	SILICONE	BLACK
A	NUT	1	PA66	BLACK
NO	DESCRIPTION	QTY	MATERIAL	PLATING & COLOR

UNLESS OTHERWISE SPECIFIED TOLERANCES

Singatron Enterprise Co., Ltd.
信音企業股份有限公司

DECIMALS:	ANGLES:	TITLE	QUICK SERIES STANDARD SIZE (SOLDER TYPE)	
X : ±0.5	X : ±2°	DWN	Blues	PART NO. 2QT3002-W04400H
X.X : ±0.3	X.X : ±1°	CHKD	Harlen	SCALE: 2:1 UNIT: mm
X.XX : ±0.2		APVD	STEVE	SIZE: A3 SHEET: 1 OF 1 REV: B

CUSTOMER COPY