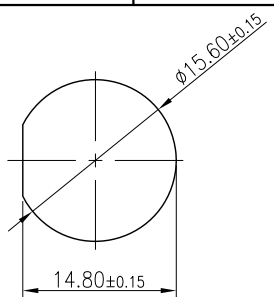
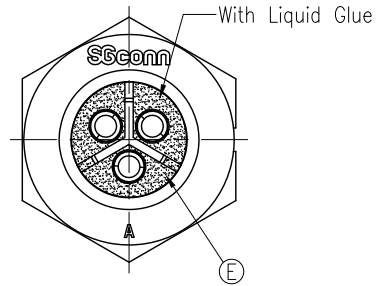
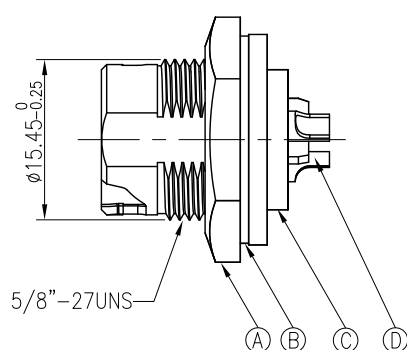
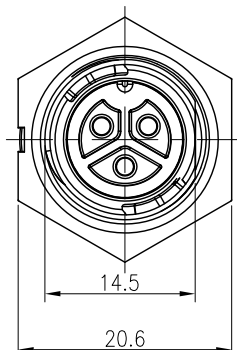
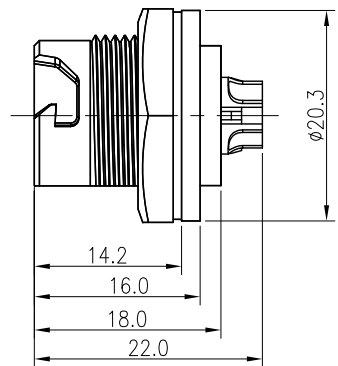


REV.	ECN NO OR DESCRIPTION	REVISED	DATE
A	PDR NO.:S131028-6B	Harlen	2015.1.21



RECOMMENDED PANEL CUT-OUT



NOTES:

- ELECTRICAL CHARACTERISTICS:
 - CURRENT RATING: 10 AMPS.
 - CONTACT RESISTANCE: 30 mOhm Max.
 - INSULATION RESISTANCE: 100 MOhm Min at 500VDC.
 - BREAKDOWN VOLTAGE: 1000VAC PER MINUTE
- MECHANICAL CHARACTERISTICS:
 - TIGHTENING TORQUES: 0.8~1.0Nm(7.08~8.85lbf.in.).
- ENVIRONMENTAL:
 - OPERATING TEMPERATURE: -40°C TO +105°C.
 - SEALING REQUIREMENTS: IP67.
- LIFE TEST: 1,000 CYCLES MIN.
- FOR PANEL THICKNESS MAX OF 4.0mm
- OTHER GENERAL SPEC TO REFER "QUICK SERIES GENERAL SPEC".
- FOR TECHNICAL DATA REFER TO YOUR LOCAL SINGATRON ELECTRONICS SALES OFFICE.
- ALL DIMENSIONS ARE NOMINAL FOR REFERENCE ONLY UNLESS OTHERWISE STATED.
- TO CONFORM TO SINGATRON HAZARDOUS SUBSTANCE FREE SPEC.
- GREEN PRODUCT IDENTIFICATION LABEL ON PACKAGING: **G.P. PASS**

E	LIQUID GLUE	1	N/A	BLACK
D	FEMALE PIN	3	Phosphor Bronze	1~3u" GOLD PLATING OVER NICKEL PLATING
C	BODY	1	PA66	BLACK
B	GASKET	1	SILICONG	BLACK
A	NUT	1	PA66	BLACK
NO	DESCRIPTION	QTY	MATERIAL	PLATING & COLOR

UNLESS OTHERWISE SPECIFIED TOLERANCES		Singatron Enterprise Co., Ltd. 信音企業股份有限公司		
DECIMALS: X :±0.5 X.X :±0.3 X.XX :±0.2		TITLE QUICK SERIES STANDARD SIZE (SOLDER TYPE) MALE CONN. FEMALE PIN DWN Harlen PART NO.2QT3014-W03400H CHKD JF SCALE 2:1 UNIT: mm APVD STEVE SIZE: A3 SHEET:1 OF 1 REV:A		
CUSTOMER COPY				