

1

2

3

4

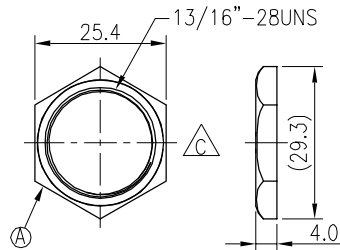
5

6

7

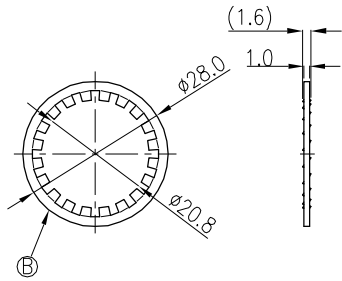
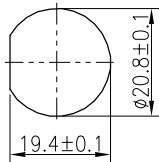
8

## PANEL NUT

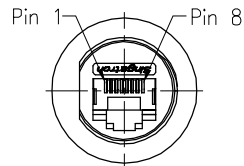


螺牙內增加耐落處理(整圈塗布)  
耐落膠規格:T-40 COLOR:BLUE

## SPRING WASHER

RECOMMENDED PANEL  
CUT-OUT

## Conn.

Pin Assignments  
Front View

## NOTES:

1. WATERPROOF RATE: IP67  
IP67: IMMERSED IN 1M WATER FOR 30 MINUTES
2. ELECTRICAL CHARACTERISTICS:  
2-1. RATING:125V 1.5A  
2-2. CONTACT RESISTANCE: 3Ω MAX.(INITIAL)  
2-3. DIELECTRIC WITHSTANDING VOLTAGE: 300V AC FOR ONE MINUTE  
2-4. INSULATION RESISTANCE: 30MΩ MIN. MEASURED BY 300 VDC
3. OTHER GENERAL SPEC. TO REFER "RJ45 SERIES SPEC".
4. TO CONFORM TO SINGATRON HAZARDOUS SUBSTANCE FREE SPEC.
5. GREEN PRODUCT IDENTIFICATION LABEL ON PACKAGING: **G.P. PASS**
6. FOR PANEL THICKNESS MAX OF 4.3mm

ORANGE	8
WHITE	7
BLUE	6
GREEN	5
BROWN	4
YELLOW	3
RED	2
BLACK	1
WIRE COLOR	CONN.



120±10

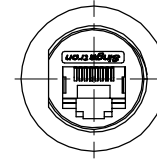
22.1

20.6

WITH LIQUID GLUE

19.0

REV.	ECN NO OR DESCRIPTION	REVISED	DATE
A	PDR NO.:T160718-4A	JF	2017.10.27
B	ECN NO.: S202006-P02	JAY	2020.11.25
C	ECN NO.: S202106-R01	LEI	2021.08.23



CONN1.

WATERPROOF RATE: IP67

H	GLUE	1	SILICON	BLACK
G	WIRE	8	UL1007 24AWG	SEE PIN OUT
F	GASKET	1	SILICONE	BLACK
E	CAT.5e	1	N/A	30u"GOLD PLATED
D	SCREW	1	STAINLESS STEEL	N/A
C	BODY	1	ZINC ALLOY	120u"NICKEL PLATED
B	SPRING WASHER	1	SUS304	N/A
A	PANEL NUT	1	BRASS C3604	120u"NICKEL PLATED
NO	DESCRIPTION	QTY	MATERIAL	PLATING & COLOR
UNLESS OTHERWISE SPECIFIED TOLERANCES			Suzhou Singatron Auto Electronics CO.,LTD. 蘇州信音汽車電子有限公司	
DECIMALS:		ANGLES:	TITLE RJ45 KEYSTONE JACK SOCKET	
X	±0.5	X	±2°	DWN LEI PART NO.2TJ3003-W051A2H
X.X	±0.3	X.X	±1°	CHKD JF SCALE 1:1 UNIT: mm
X.XX	±0.2			APVD JF SIZE: A3 SHEET:1 OF 1 REV: C
CUSTOMER COPY				