

CONSUMER CONNECTORS

ELECTRONIC COMPONENTS

USB TYPE-C

TBT5
USB4
USB3.2



USB 3.2 USB 2.0

Type-A



DC POWER JACK



RJ TRANSFORMER



AUDIO JACK

Ø3.5mm
Ø2.5mm



HDMI



DDR5 LONG-DIMM SO-DIMM



WATERPROOF CONNECTORS

RJ45

CAT-5e
CAT-6
CAT-6a



USB

USB 2.0 Type-A
USB 3.0 Type-A
USB Type-C



CABLE GLAND CABLE JOINT

I-Type
T-Type



USB CHARGER

Input -
12V / 24V / 48V
Output -
Double port A 2.1A + 2.1A
QC3.0 / PD3.0



WATERPROOF CONNECTORS

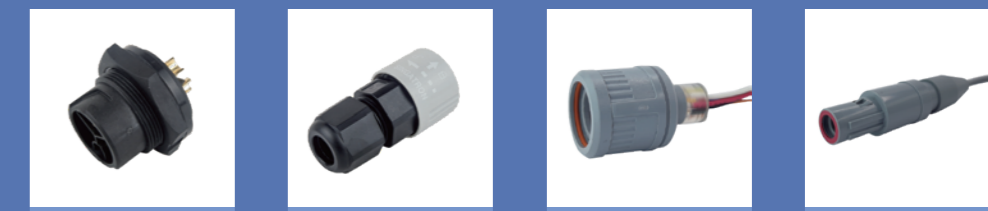
CIRCULAR

Mini Size
Standard Size
Middle Size
Large Size



QUICK-LOCK

Push Pull
Push Lock



M SERIES

M5 Size
M8 Size

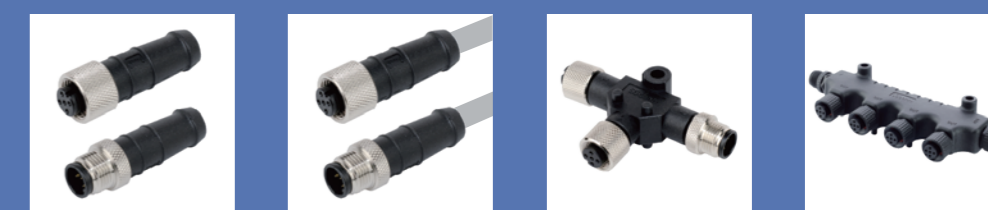


M12 Size
A / B / D / X / K-Code



NMEA 2000

Micro Size

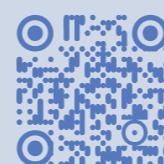


AVIC

WEBSITE



CONTACT



SINNEX
Waterproof Connectors





LEV · E-BIKE

WATERPROOF CONNECTOR

LEV · E-BIKE

WATERPROOF CONNECTOR

ENERGY STORAGE

WATERPROOF CONNECTOR



1 ACCESSORY



2 POWER CONNECTORS FOR MOTOR & MOTOR CONTROLLER



5 SIGNAL CONNECTORS FOR DISPLAY & SENSOR



3A



3A



1A



3A



3A

4 POWER CONNECTORS FOR BATTERY CHARGING

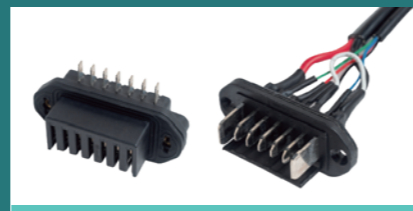


5A+2A | 2+2 pins
2+3 pins

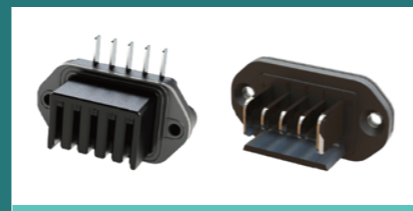


20A+6A+2A

3 POWER CONNECTORS FOR BATTERY DISCHARGING



30A + 5A | 2+3 pins
2+5 pins
2+6 pins



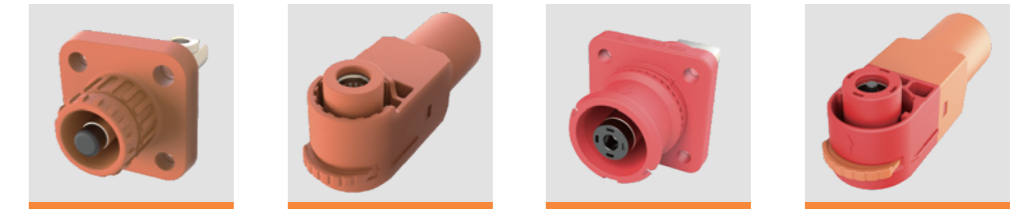
20A+5A



30A+2A

RIGHT ANGLE CONNECTOR

5.7 mm
8.0 mm
10.0 mm

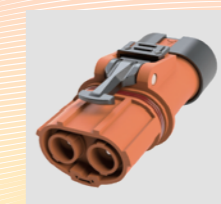


WATERPROOF STACK CONNECTOR

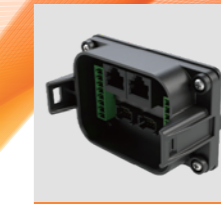
3+12 pins
5+12 pins



AUX. POWER



TJ ASSEMBLY



MANUAL SERVICE DISCONNECT

